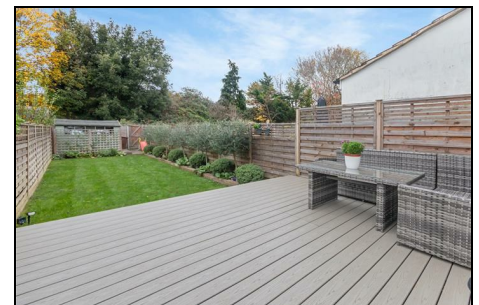
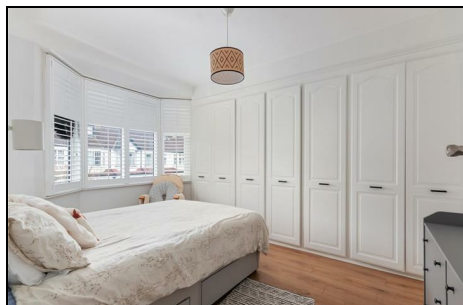
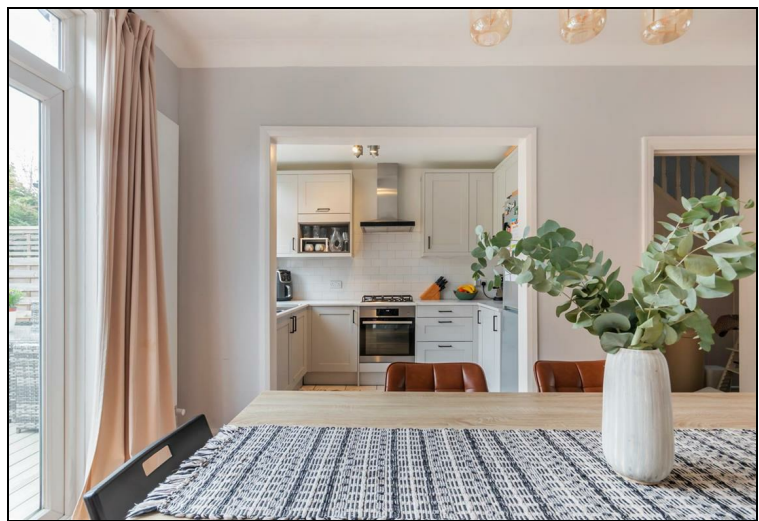


Abbott Avenue Raynes Park, SW20 8SQ

£850,000 Freehold



This gorgeous **THREE BEDROOM** un-extended terrace house is located in a desirable cul de sac, only 0.6 Miles to Raynes Park Rail Station and High Street. On the ground floor there is a charming entrance hall with under-stairs storage and a fabulous open plan ground floor incorporating a spacious living area, a beautiful kitchen with quartz work tops and dining area with doors directly onto the 61ft rear garden. The first floor houses three bedrooms (two double with built in wardrobes and one single) and a superb modern bathroom. Offering excellent potential to further extend in to the loft and the rear of the property S.T.P.P. Easy access to Central Wimbledon (0.9miles), Wimbledon Chase Station and Primary School (0.5 miles) and Wimbledon Common (0.9miles).





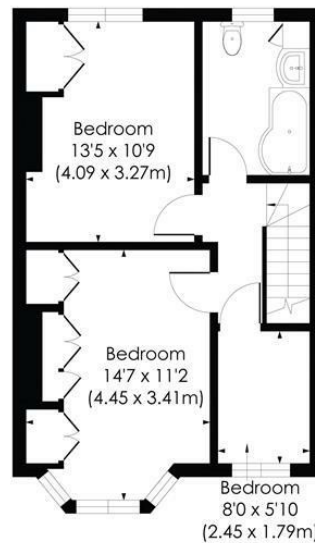
ABBOTT AVENUE, SW20

Approx. Gross Internal Floor Area

981 Sq. ft/91.17 Sq. m



GROUND FLOOR

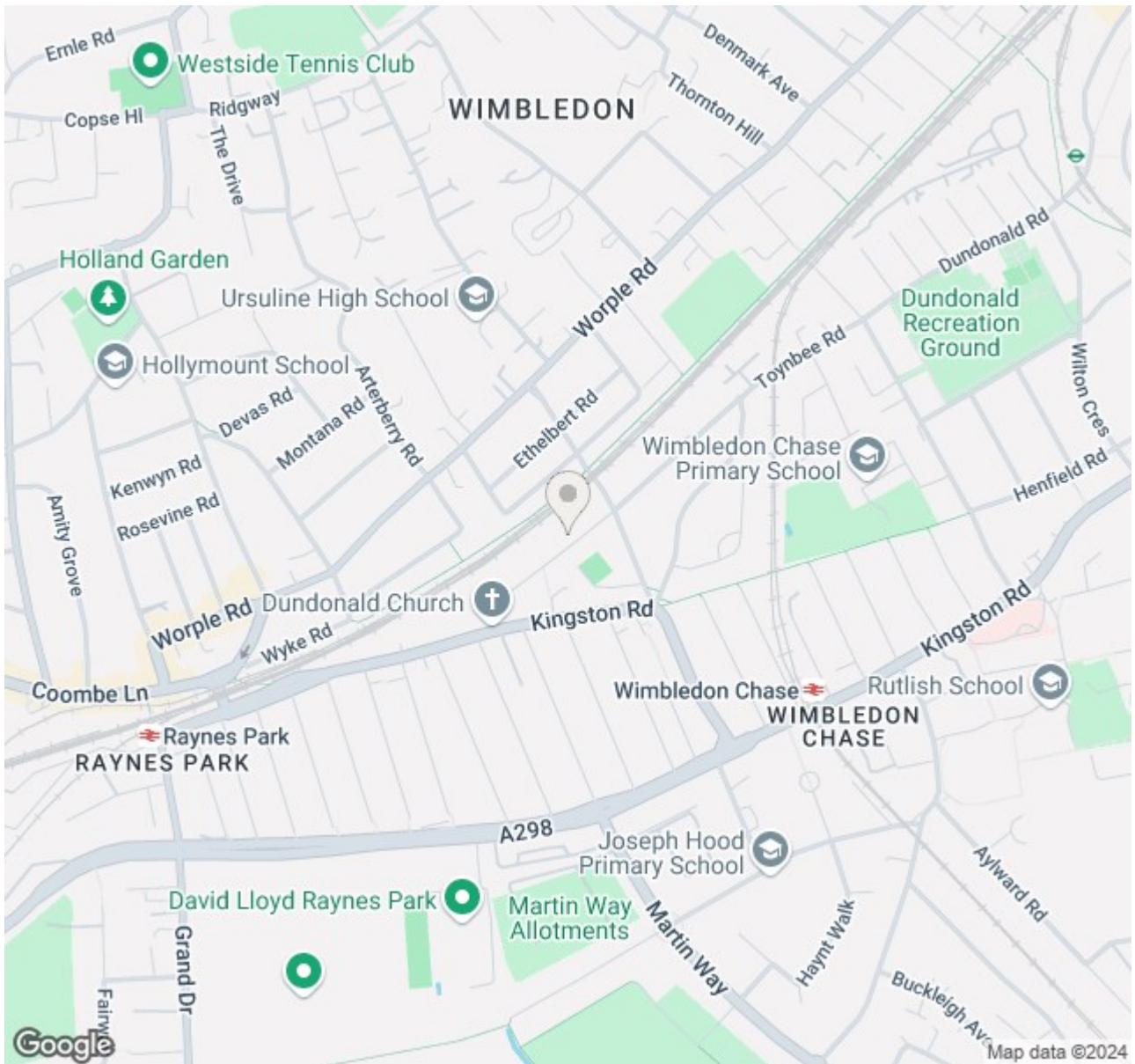


FIRST FLOOR

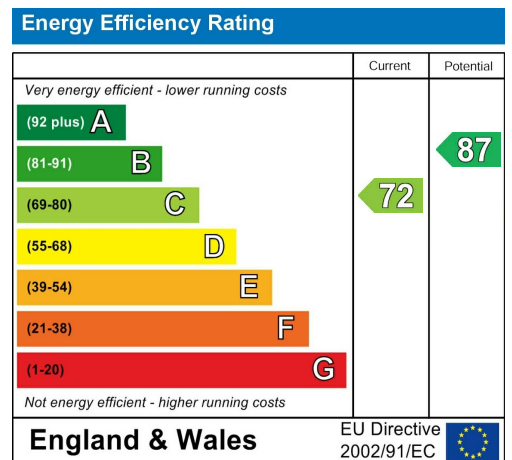
© Pixangle Property Marketing Ltd. info@pixangle.com Tel: 0208 870 2118

pixangle
PROPERTY MARKETING

This floor plan has been prepared for the purpose of illustration only in accordance with the latest RICS code of measuring practice and is not to scale. All measurements and areas are approximate and whilst every effort has been made to ensure the accuracy of the plan contained here, no responsibility is taken for any error, omission or misstatement.



- Three Bedroom Mid Terrace House
- Beautifully Presented Throughout
- 0.6 Miles to Raynes Park Station
- Desirable Cul De Sac Location
- 61ft Rear Garden
- Potential to Extend S.T.P.P
- 0.5 Miles to Wimbledon Chase Primary School
- Gorgeous Kitchen and Bathroom
- EPC - C
- Council Tax Band - E



For Free Mortgage Quote and Best Mortgage Rates, call Ellisons Mortgage Advisor on 0208 944 9595



Although these particulars are believed to be correct, their accuracy is not guaranteed and they do not form part of any contract.

Celebrating 30 years of successful Sales and Lettings in Merton

